



***Lord, what do you want
to do through me?***

***“It is time to carry our mission—
God’s mission through us—
into the next generation.”***

Message from our Rector



Dear Friends,

Excitement is building as you and I approach the first major capital refurbishing in our parish's history. And I think many of us agree that it couldn't come at a better time.

As you are aware, we were the recipients of a \$100,000 gift a few years ago which was earmarked for this project. Our campaign consultant tells us we'll be able to raise much more than that from our membership, plus the diocese will likely be generous with us as well. This means that very soon we will see some much needed capital improvement in our physical plant.

This is a crucial time for us for several reasons. First, as our architects and engineers have pointed out, we have deferred maintenance for too long. We are well past the 'use by' dates on boilers, windows, carpets, etc. and it's simply time to get out with the old and in with the new. Also, at this time our parish is pretty healthy. Unlike a large number of congregations that approach the diocese for financial assistance, we are not in a position of having to close our doors because we're broke, empty, or in deep turmoil. We are a healthy, growing parish—and there's no better time to invest in our community than now.

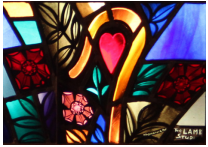
However, the biggest reason for undertaking this project is because we understand Christ is calling us to deeper places of our life in Him: to go deeper as a welcoming, hospitable place, to go deeper into forming relationships within our community, and to go deeper in education for all ages. Our capital improvements put us in a much better (and much needed) place to welcome others, build relationships, and take lifelong formation more seriously.

Sure, there's no 'good time' for us to come up with extra dollars for improvements like this—but given the landscape that's ahead of us, I hope you will prayerfully consider asking the question, 'Lord, what would you have me do?'

It is a pleasure to be on this part of the journey with you and I look forward to what our future holds together.

Fr. Christ†





A Capital Campaign to support our mission...

God is at work in our parish! After six decades of dedicated service to local families and the greater Southfield community, we are being led into an exciting season of refreshment and vision.

We believe the Risen Christ is calling us to deeper places of community, relationship, and outreach—and we are being asked to prepare ourselves and our facilities for this bold new chapter in our history.

Now Is the Time

We are at a pivotal point. We must invest in our parish's physical plant now. Our boilers and roof must be replaced. We need air conditioning and energy-efficient windows. Our bathrooms need to be updated. We need to improve our parking lot and how people enter and exit our building. We need to reconfigure our classrooms and create more storage space. We also must upgrade our facilities to meet current building codes, including improved accessibility for those with physical challenges.

Since we must invest in our facilities now, now is the time for us to imagine what we really can do with our facilities.

We could choose only to update our physical plant to maintain the status quo. But considering the mandatory updates that we would need to invest in even at the lowest level of renovation, our building still would undergo substantial upheaval just to comply with current codes and accessibility requirements.

No matter what we do, we will be stirring up dust. So before the work begins, we ask you to pray about this pivotal point in our parish life and ask: *How does God want us to use this property in the 21st Century?*

From Mid-Century to 21st Century

St. David's was founded in 1952. The group that first met in a Berkley school gymnasium grew and laid a cornerstone for a new worship space at our current address in 1956. They expanded the parish campus with a new sanctuary in 1963.

Since 1963, little has changed on the campus of St. David's. It's a blessing that our parish founders could pass on to us a facility for service to God that we could use virtually untouched for so long. But today, building issues demand attention because of our aging infrastructure. Our facilities no

longer serve well our parishioners or the people we serve through outreach efforts.

Anyone buying a home today that hasn't been updated since 1963 would need to invest substantially in that home. Wise homeowners look beyond just replacing aging infrastructure. They know it's less expensive in the long run to have one contractor make multiple changes at one time rather than bring in another contractor several years later for a second round of construction.

Financial and Pastoral Prudence

The same is true with our parish home at St. David's. By making substantial changes at one time with one contractor, we save money. We also avoid spending money in the future to undo money we would spend today on only temporary fixes. Second, we help ourselves and the people we serve through outreach by creating the dust and inconvenience of construction only once instead of multiple times.

Through your prayers and your financial support, we ask you to help us build a 21st Century home for God's use on Twelve Mile Road in Southfield.

...to love and serve God through worship, outreach and love for all

Nurturing our ability to love and serve God...



Like a tree sheltering Jesus before He fed the crowd, our church shelters the worship and work we do in Christ's name.

Under the shelter of our roof, Christ takes what we offer to God—our time, talent and treasure—and uses it to work miracles big and small. These miracles serve God's purpose *both* for us *and* for the people we serve through outreach.

The boy who gave Jesus five barley loaves and two small fish had no idea what Jesus could do with such a seemingly small offering for such a large need. Yet he gave it to Jesus anyway. And through that offering, God blessed not only the boy but the entire

crowd with more than enough for all. In the same way, Christ uses whatever we offer to God with thanksgiving and works miracles that serve God's purpose.

That purpose is love. Love is why our parish exists and why we maintain our presence on Twelve Mile Road in Southfield. Our church building and grounds serve as a witness to God's love and presence in the world. More importantly, our church building and grounds are the shelter and space we rely on to love and serve God through worship, outreach and love for all.



A Home and Hub for Outreach

Our facilities serve both parishioners and the surrounding community. Groups using our facilities include Alcoholics Anonymous, Al-Anon, Parents of Murdered Children, and the South Oakland Shelter. We support SOS not only by sheltering the homeless for one week each year but also by sponsoring and hosting the End Homelessness Now race, by offering kitchen space for cooking classes, and by hosting the annual Christmas Party for shelter guests.

We also provide space for yoga and acting classes, quilters, the Vacation Bible School, summer play camps for children, and our own parish youth groups.

Each Lent, our parish touches the lives of hundreds of people in our community through our Drive-Through Ashes program.

Our facilities also serve as a hub for coordinating outreach beyond our walls, such as the Detroit Rescue Mission, Crossroads Soup Kitchen, Haiti Outreach Mission, the Welcome Inn, Vandenberg World Cultures Academy, and St. Anne's Mead Senior Community.



Fellowship, Formation, Hospitality

In addition to worship, our parish life focuses on three main activities of doing God's work: fellowship, formation and hospitality. We will look at these key functions of parish life as we renew our building for God's service in the 21st Century.

Our goal is to enhance our space to improve our ability to serve God through **fellowship** for parishioners and guests...spiritual **formation** in Sunday School classes, adult forums, and other educational programs... and **hospitality** for both parishioners and our guests. *We seek facilities that will help us nurture our own spiritual lives and those we serve.*

...by enhancing our space for fellowship, formation and hospitality

“Where two or more are gathered in Christ’s name...”

...there is Christ in our midst. As a House of God, St. David’s is blessed that some 400 parishioners and guests meet each week under our roof for worship, fellowship, formation, and hospitality.



Our roof is a main focus of our renovation plans. Much of our building is enclosed by a flat—and leaky—roof. Our plans would address that issue by replacing the aging flat roof with a new pitched roof.

Not only would a pitched roof add a more pleasant welcoming exterior from Twelve Mile Road...it also would offer us more storage space as well as room to upgrade the mechanical and electrical systems for the interior of our building.

Mechanical and electrical upgrades would include replacing our aging boilers with a modern, energy-efficient system for heating, ventilation, and air conditioning. Parishioners and guests would benefit from more comfortable interior temperatures year-round, as well as improved air quality and sufficient hot water on-demand throughout our building. Electrical upgrades would allow us to better serve the people of God in the

21st Century by allowing us to use more effectively our computers, sound system, and kitchen equipment.



Fellowship

By relocating the Corner Fellowship Hall closer to the Sanctuary, the heart of our parish campus, both parishioners and guests could more easily enjoy the fellowship of our coffee hours and other special events.

An upgraded sound system and more comfortable seats would allow people of all ages the chance to get the most from our time together in the Fellowship Hall.

Formation

Enlarged classrooms, some with retractable room dividers, would allow our parish more flexibility to host larger and more varied activities with less distraction. This also would expand the options for activities in the Fellowship Hall during Vacation Bible School.



Dedicated storage within each classroom would make it easier for Sunday School teachers to locate educational supplies.

Hospitality

Extending hospitality to others is a key Biblical principle. We honor this principle by

providing to all who come here a parish campus that is safe, comfortable, and pleasant. It starts with a welcoming “curb appeal” from Twelve Mile Road and extends to a well-maintained parking lot and sidewalks in back.



It includes entranceways that are easier to reach from the parking lot and vestibules with “air locks” that limit outside air infiltration when the doors are opened.

It includes a foyer that comfortably allows people to stand or sit and talk...and serves as additional gathering space for events.

It includes modern, barrier-free restrooms ...including a dedicated shower for use by our guests from the South Oakland Shelter.

It includes a kitchen with new cabinets, a new countertop and more storage...allowing for better meal preparation and work flow.

It includes enlarged offices that allow records and other office-related items to be located in one spot for more efficient use.

And throughout the building, it includes new energy-efficient windows, doors and lighting, new flooring, and paint...*making our parish campus more efficient and inviting.*

A space that reflects our commitment to fellowship, formation and hospitality

Our plans for the future...your questions answered

How Is This Capital Campaign Different from Other Campaigns at St. David's?

Other capital campaigns at St. David's were focused on raising funds for a repair or maintenance need. This campaign is mission driven...focused on planning, designing, and constructing a facility that will help us and future generations continue to love and serve God through worship, outreach, and love for all.

How Much Money Do We Need to Raise?

We are seeking \$1.8 million from several sources in order to start construction.

The portion we seek to raise from parishioners is \$300,000. To reach that \$1.8 million target, we also will ask for funds from the diocese, grant agencies, and loans. We will scale our design based on what we receive.

Our goal is to raise enough money not only to improve our facilities for today's needs, but also to create a modern, energy-efficient building that is useable both today and in the future.

When Would Construction Begin?

We hope to start construction sometime in 2017.

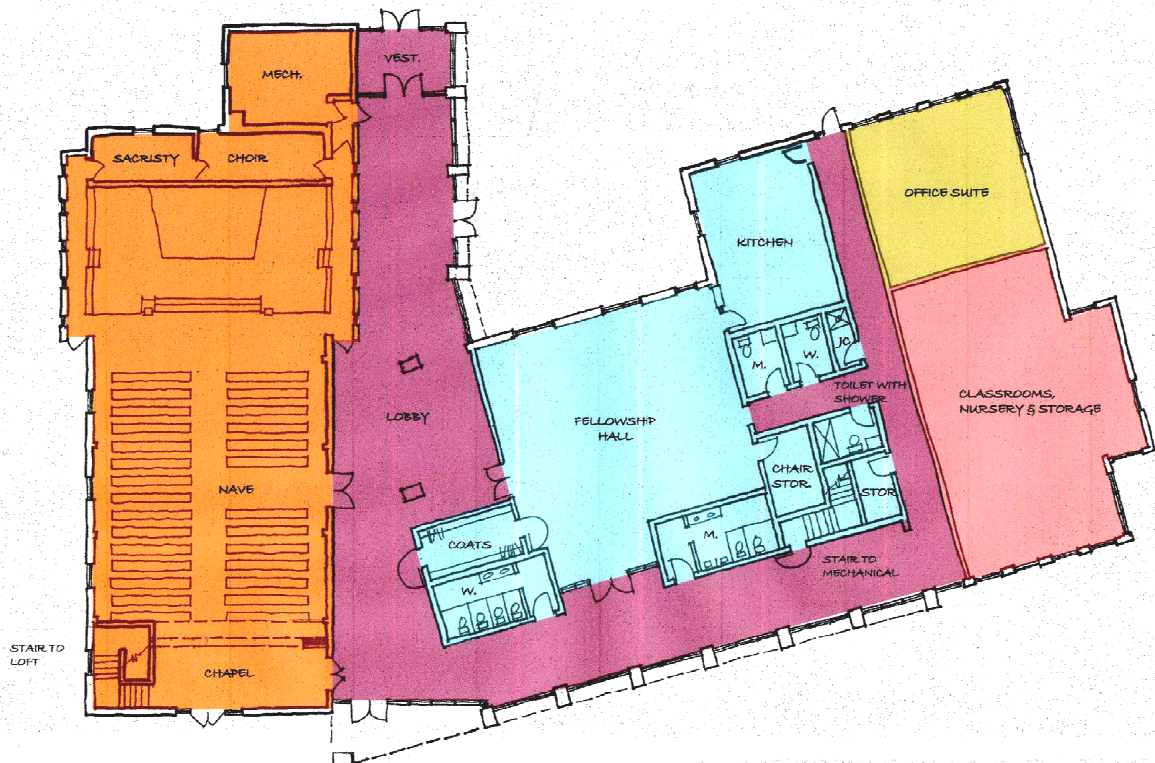
What Plans Can You Show Us?

To the left is an architect's rendering of the proposed new zones of activity for the interior of our building. **Please note that these plans are only in a preliminary stage.** We also have described some of the changes we are considering on Page 5.

The back page of this brochure shows the architect's vision of the front of St. David's once construction is done. The additional windows on the second level and pitched roof line create a more inviting presence for our church from Twelve Mile Road.

This project is a legacy—a chance to touch the future by creating a facility designed to outlast our lifetimes.

Our goal through this campaign is to help St. David's remain a vital presence on Twelve Mile Road in Southfield where parishioners today—and future generations—can continue to worship and work in Christ's name.



The time to build our future is *now*



“All things come of thee, O Lord, and of thine own do we give thee.”

We at St. David’s are at a critical moment in our parish history. The Mid-Century infrastructure of our facilities is beyond repair or temporary fixes. We must invest *now* in our parish campus.

Yet along with this urgent need, we find our parish healthy and growing. The responses we received from parishioners during our listening campaign tell us: We believe God is calling us to build our future now.

A Once-In-A-Lifetime Opportunity

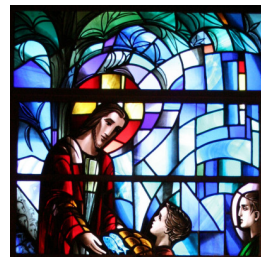
This is a once-in-a-lifetime undertaking for St. David’s. It is also a once-in-a-lifetime opportunity to renovate our building for the future. We seek to leave to the next generation a legacy: a building that will serve them well for God’s worship and work in the 21st Century. So before we break ground and stir up dust, please pray for our capital campaign and ask: *“Lord, what do you want to do through me?”*

Your prayers and financial support are vital for this effort. There is never a ‘good time’ to ask people for more money. Yet that is what we believe God is asking of us. The need is now. So we must ask you now to discern

through prayer what you can contribute to this effort—a three-year pledge above and beyond your current weekly offering for parish expenses.

Large Growth From Small Sacrifices

The boy who gave Jesus five barley loaves and two small fish had no idea what Jesus could do with such a seemingly small offering for such a large need. Yet he offered it anyway. It was a sacrifice for him to give. Yet through that gift, Jesus fed not only the boy but the entire crowd with more than enough for all.



In that same spirit, we ask you to consider what you can give for this work. We may think we have nothing to give...yet we may not realize some of the financial

resources that *are* available to us. A small daily or weekly change in our spending habits can free up money that we may not have thought available for God’s use.

For example, if we regularly buy take-out coffee or restaurant lunches during the work week, we could choose instead to bring coffee and a brown-bag lunch from home. That could free up \$25-\$50 per week, adding up to \$3,900 or more over three years.

Weekly	Monthly	Annually	3-Year Total
\$25	\$108	\$1,300	\$3,900
\$50	\$217	\$2,600	\$7,800
\$100	\$433	\$5,200	\$15,600
\$200	\$867	\$10,400	\$31,200

Other Options for Giving

Some of us might have resources other than cash that we can offer for this once-in-a-lifetime renovation. For example, you could transfer ownership of an asset, such as stocks, bonds, mutual fund shares, real estate, collectables, or other marketable property. The church can sell the property without paying a capital gains tax and the donor may receive a tax deduction.

Tax Deductibility

All donations to our capital campaign fund are potentially tax deductible. This allows you to control how some of your tax dollars are spent. In addition, all funds designated for capital improvements must be used for that purpose—none of it may be diverted for operating expenses.

What level of support are we seeking from parishioners? There is no specific dollar amount because we all have different financial resources available to us. **We ask only that you give from your heart at a sacrificial level.** We ask not an equal share from parishioners but an equal sacrifice. *You will know you have pledged the right amount for your ability when you feel glad about your contribution for God’s work*



From our Campaign Co-Chairs

Dear Friends,

The act of giving is a very personal commitment, but we feel compelled to share our feelings regarding the St. David's capital campaign. We believe it is essential to the long term survival of our parish. The outreach programs supported by St. David's bring us much satisfaction and are a key component of our faith. However, there are many times we can recall when the shortfalls of the St David's infrastructure have limited the services we can offer our outreach partners (SOS, AA, etc.).

St. David's is our spiritual home and much like our residential home, it periodically requires major updates and repairs. That time is NOW for St. David's. We are excited to be a part of this capital campaign. We see it as the cornerstone to enhancing our outreach programs and growing our parish family.

We pray that you and your family will join us in fully supporting the St. David's capital campaign. There are many great outreach programs and initiatives being supported by our parish, but now is the time to take a look inward and invest in our church home. A solid and vibrant building is the foundation for a long and productive future. Again, we ask for your active participation in supporting this campaign.

YOUR CHURCH NEEDS YOU
Jake and Janeanne Jones



Dear Friends,

We have been members of St. David's since 1973 and what we really like about the parish is its continued commitment to outreach, which includes South Oakland Shelter (local), Cross Roads Soup Kitchen (regional) and Haiti Outreach Mission (international). These are just a few of the "Go ye into all the world" activities that our parish supports with our time and talents as well as with our financial contributions.

St. David's members have done this for over 60 years and we want to be part of the effort to assure that the parish can carry on with these or similar programs in the future. An up-to-date modern church facility is the catalyst that will help to make this possible.

We are very excited to participate in this capital campaign that will help St. David's go forward for the next several generations of members. We hope that you will prayerfully consider supporting this effort. St. David's and its members should be very proud of what they have done over the past 60 years, but there is also so much more we, as a parish, can do in the coming years. Again, please prayerfully consider giving your financial support for upgrading your parish's facility.

Len and Joanne Sackett





Capital Campaign 2016
St. David's Episcopal Church
12600 West Twelve Mile Road
Southfield, Michigan 48076